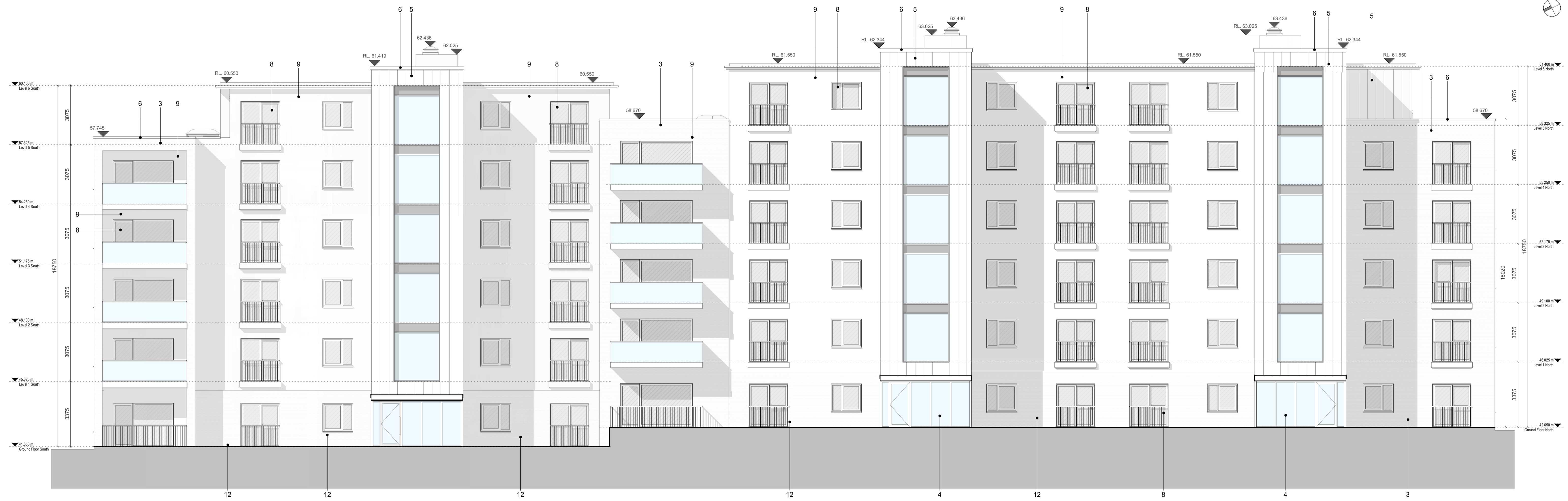
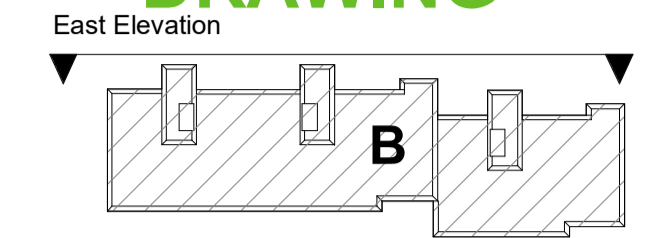


DESIGN INTENT DRAWING



1 GA - East Elevation
1 : 100

Material Legend

- 1) Oatmeal Brickwork
- 2) Glazed balustrade with power-coated metal handrails
- 3) Grey Brickwork
- 4) Powder Coated Aluminium Double Glazed Curtain Wall
- 5) Zinc Standing Seam Cladding
- 6) Powder Coated Pressed Metal Coping Detail
- 7) Powder Coated Pressed Metal
- 8) Powder Coated Aluminium Double Glazed Windows
- 9) Render Finishing Off White
- 10) Selected Limestone
- 11) Obscure Back-Painted Glazing
- 12) Charcoal Brickwork

Rev	Description	Date	Dr by	App by
Project Stage				

PLANNING

Client:
Eastwise Construction Swords Limited

Project:
Hartfield Place
Swords Road, Whitehall, Dublin 9
D09 C7F8

Drawing Title:
BLOCK B - East Elevation GA - 472 Units

Drawn	Checked	Paper Size	Scale	Date
DP	CM	A1	1 : 100 @A1	Mar. 2022

Project No. HARTPL
Drawing No. 022522
Classification
Revision

File Name:
HARTPL-CWO-BB-ZZ-DR-A-022522

Status:
S2-Suitable For Information



No.1 Sarsfield Quay, Dublin 7, D07 R9FH
t: 01 518 0170 e: admin@cwoarchitects.ie
Dublin | Cork | Galway | London | UK & Europe +
www.cwoarchitects.ie